



# Louisiana Senate Finance Committee



## FY20 Executive Budget

**04-160 – Department of  
Agriculture & Forestry**

May 2019

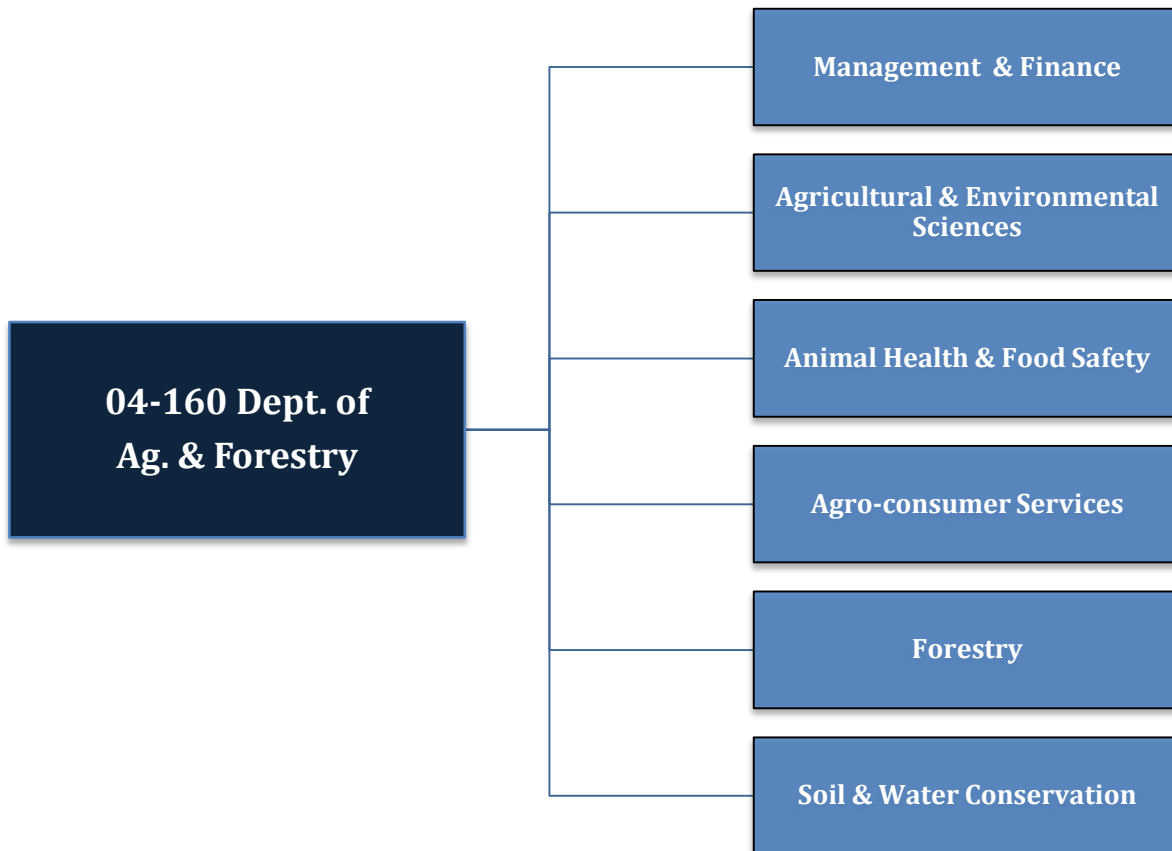
*Sen. John A. Alario, President  
Sen. Eric LaFleur, Chairman*



# FY20 Proposed Budget

## Schedule 04-160 — Dept. of Ag & Forestry

Departmental mission — The mission of the Louisiana Department of Agriculture and Forestry is to administer the laws, rules and regulations of the state regarding the growing, harvesting, processing, storing and sale of forest, crop and livestock commodities. These laws, rules and regulations are to ensure that foods are prepared in sanitary processing facilities and are safe to eat, that the state's food manufacturing sector receives the full benefit of the agency's marketing expertise, that the state's soil and water resources are protected to ensure the optimum growth and yield of crops and forests, that the state's forests are protected from harmful diseases and fires, and that Louisiana livestock receives the best in veterinary care. The department also works with other state, regional, national and international sectors of business and government in fulfillment of its goal to provide oversight services and administrative assistance in the conduct of the affairs of rural Louisiana.





# Department of Ag. & Forestry

## FY18, FY19, and FY20 Comparison

### Total Funding — All Means of Finance

<b>Total Funding</b>	<b>FY18 Actual</b>	<b>FY19 Enacted</b>	<b>FY19 EOB as of 12-1-18</b>	<b>FY20 Proposed</b>	<b><i>Difference FY19 EOB HB1 vs. FY20 Proposed</i></b>
Management & Finance	\$ 17,729,549	\$ 21,038,296	\$ 21,038,296	\$ 20,155,726	\$ (882,570)
Agricultural & Environmental Sciences	\$ 16,620,838	\$ 12,044,481	\$ 12,780,866	\$ 13,174,367	\$ 393,501
Animal Health & Food Safety	\$ 13,162,776	\$ 14,155,769	\$ 14,155,769	\$ 14,268,504	\$ 112,735
Agro-Consumer Services	\$ 7,774,993	\$ 8,206,268	\$ 8,206,268	\$ 9,033,234	\$ 826,966
Forestry	\$ 14,407,505	\$ 15,523,432	\$ 15,523,432	\$ 16,027,193	\$ 503,761
Soil & Water Conservation	\$ 1,435,132	\$ 1,602,032	\$ 1,602,032	\$ 2,010,509	\$ 408,477
<b>TOTAL</b>	<b>\$ 71,130,793</b>	<b>\$ 72,570,278</b>	<b>\$ 73,306,663</b>	<b>\$ 74,669,533</b>	<b>\$ 1,362,870</b>
Total Authorized FTEs	563	566	566	568	2

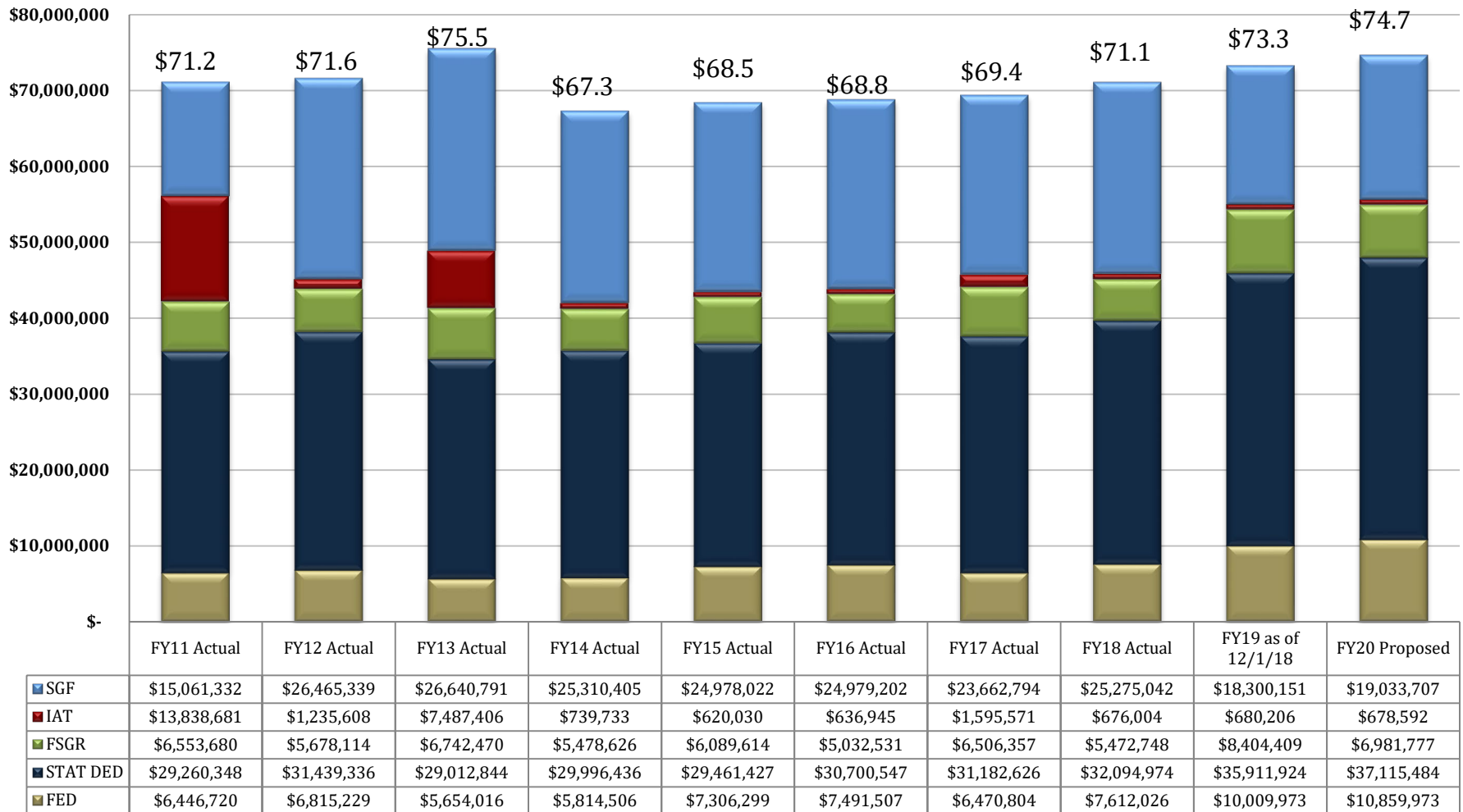


# Dept. of Ag. & Forestry

## Changes in Funding since FY11

**Total Budget by Fiscal Year and Means of Finance  
(in \$ millions)**

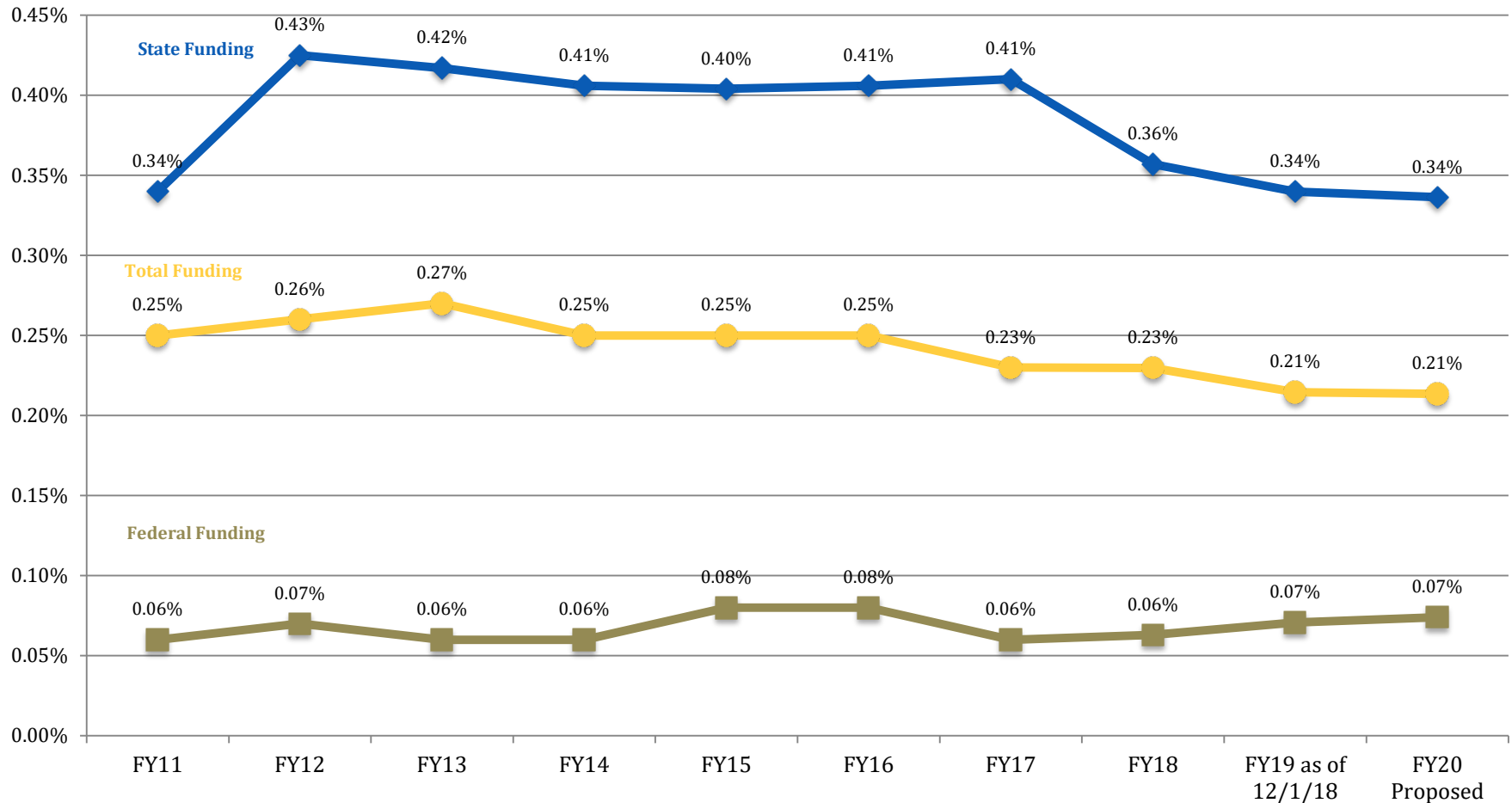
Change from FY11 to FY20 is +4.9%.





# Dept. of Ag & Forestry Changes in Funding since FY11

Dept. of Ag & Forestry's Budget as a Portion of the Total State Budget

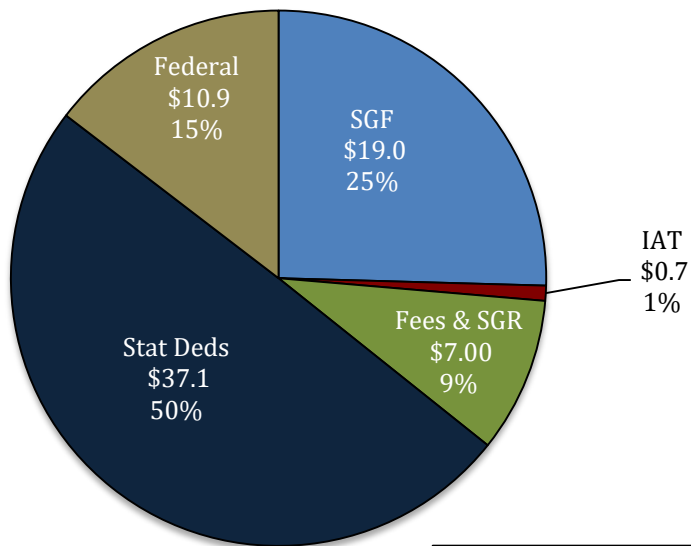




# Agriculture and Forestry

## FY20 Proposed Means of Finance

**FY20 Proposed  
Total Means of Finance**  
(In Millions)



Total \$74.7 m.

### Non-SGF Sources of Funding:

Non-SGF means of finance in the department include Interagency Transfers, Fees & Self-generated Revenues, Statutory Dedications and Federal monies.

**Interagency Transfers** are derived from the Louisiana Department of Health, the Office of the State Fire Marshal for wildfire prevention and suppression activities, the Office of Coastal Protection and Restoration for developing erosion control plans along the coast of Louisiana, Best Management practices, water quality, and wetland resource programs.

**Fees and Self-Generated Revenues** are derived from insurance and other reimbursements; reimbursement from LAFA for salaries of maintenance personnel; grading fees assessed on meat, meat products, fish and fish products; a fee of \$2.00 per calf hood vaccination at auction markets; vaccination fees; Sale of Health Certificates; Equine Infectious Anemia Surveillance & Horse Identification Program; Deer farming; Turtle Farmers License fee; Livestock Sanitary Board; Poultry Graders; Dairy and Poultry Trust Fund; LA Egg Commission; Egg Assessment Fees; funds collected from assessments on sales of milk and dairy products; timber sales from the State Forests; fees assessed for prescribed burning and general forestry assistance materials; and from the sale of commodities and services.



# Agriculture and Forestry

## FY20 Proposed Means of Finance

### Non-SGF Sources of Funding: (Continued)

**Statutory Dedications** are received from a variety of sources, including the

- Structural Pest Control Commission Fund (S) via fees on branches and contracts of termite control operators;
- Feed and Fertilizer Fund (S) via tonnage fees on feed and fertilizer;
- Louisiana Agricultural Finance Authority (LAFA) Fund (S) as a result of interest income and fees collected with any bonds issued by LAFA;
- Pesticide Fund (S) via fees from labeling and registration of certain pesticides;
- Petroleum Products Fund (S) via assessments, fees, penalties, and all other funds related to the inspection, regulation, and analysis of petroleum products, any commercial weighing or measuring device used in the distribution handling or sale of petroleum products and enforcement;
- Agricultural Commodity Dealers and Warehouse Fund (S) via assessments on commodities stored at the first point of sale, inspection and certification of moisture meters, warehouse licenses;
- Weights and Measures Fund (S) via inspection fees for weights and measures scales;
- Boll Weevil Eradication Fund (S) via penalties and fines charged to cotton growers under the regulations of the Boll Weevil Eradication Program;
- Horticulture and Quarantine Fund (S) via fees collected for Apiary permits, fees for collecting and enforcing different horticultural professions and occupations, fees for inspection and certification of cotton for the presence of the boll weevil, and reasonable fees to help defray the expenses incurred for salaries for inspecting nursery stock grown or propagated for sale or distribution;
- Seed Commission Fund (S) via fees from seed certification;
- Sweet Potato Pests and Diseases Fund (S) via sweet potato inspection fees;
- Livestock Brand Commission Fund (S) via fees for recording brands or marks, renewals and transfers;

### Non-SGF Sources of Funding: (Continued)

- Forest Protection Fund (S) paid by the landowners at the rate of 8 cents per acre;
- Forest Productivity Fund (S) that receives 75% of the state's share of the timber severance tax;
- Agricultural Commodity Self-Insurance Fund (S)
- and the Grain and Cotton Indemnity Fund (S).

*(S) = Statutory Fund*

**Federal Funds** are received from the U.S. Department of Agriculture, the Environmental Protection Agency (EPA) - Enforcement and Certification Programs, the Ground Water Protection Worker Protection & Endangered Species Program, the USDA - Imported Fire Ant Program, the EPA - Feed Inspection Capacity Program, the federally funded Livestock Sanitary Board Program, reimbursements from the U.S. Department of Agriculture (USDA) for grading and certification of meat and meat products, reimbursements from the U.S. Department of Commerce for certification of fish and fish products, Federal Egg Product Inspection, the Federal Container Salvage Fund, State Administrative Expenses for food distribution, the U.S. Department of Agriculture (USDA) for commodity credit for reimbursement of audit expenses, Fruit and Vegetable Grain Cooperative Agreement, Weights and Measures Cooperative Agreement, the Crop and Livestock Statistical Reporting Service, the U.S. Forest Service for forest protection and fire assistance; U.S. Department of Agriculture (USDA) for development of watershed plans.



# Dept. of Ag. & Forestry Dedicated Funds FY18, FY19, and FY20

Dedicated Funds	Source of Funding	FY18 Actual	FY19 EOB	FY20 Proposed
Agricultural Commodity Dealers & Warehouse Fund	Fees, fines, assessments, and penalties	\$1,772,431	\$2,277,455	\$2,318,769
Boll Weevil Eradication Fund	Fees and Fines to cotton producers	\$19,135	\$100,000	\$50,000
Feed and Fertilizer Fund	Fees, fines, assessments, and penalties	\$2,040,327	\$2,705,390	\$3,266,992
Forest Protection Fund	Forest protection tax on timber land	\$806,606	\$806,606	\$806,606
Forestry Productivity Fund	Portion of timber severance tax	\$333,333	\$333,333	\$333,333
Horticulture and Quarantine Fund	Fees, fines, assessments, and penalties	\$718,077	\$2,550,000	\$2,550,000
Livestock Brand Commission Fund	Fees related to livestock branding and recordation	\$4,971	\$10,000	\$40,000
Louisiana Agricultural Finance Authority Fund	A portion of taxable net slot machine proceeds	\$12,000,919	\$11,802,482	\$11,805,932
Pesticide Fund	Fees, fines, assessments, and penalties	\$5,293,249	\$5,400,000	\$5,723,155
Petroleum Products Fund	Fees, fines, assessments, and penalties	\$4,600,000	\$4,952,219	\$4,628,921
Seed Commission Fund	Fees	\$683,220	\$807,008	\$807,008
Structural Pest Control Commission Fund	Permit, registration, and related fees	\$1,444,291	\$1,738,655	\$1,603,535
Sweet Potato Pests and Diseases Fund	Fees on bushels of sweet potatoes	\$149,640	\$200,000	\$200,000
Weights and Measures Fund	Fees on commercial weighing and measuring devices	\$2,228,776	\$2,228,776	\$2,981,233
<b>TOTALS</b>		<b>\$32,094,975</b>	<b>\$35,911,924</b>	<b>\$37,115,484</b>



# Dept. of Ag. & Forestry Categorical Expenditures FY18, FY19, and FY20

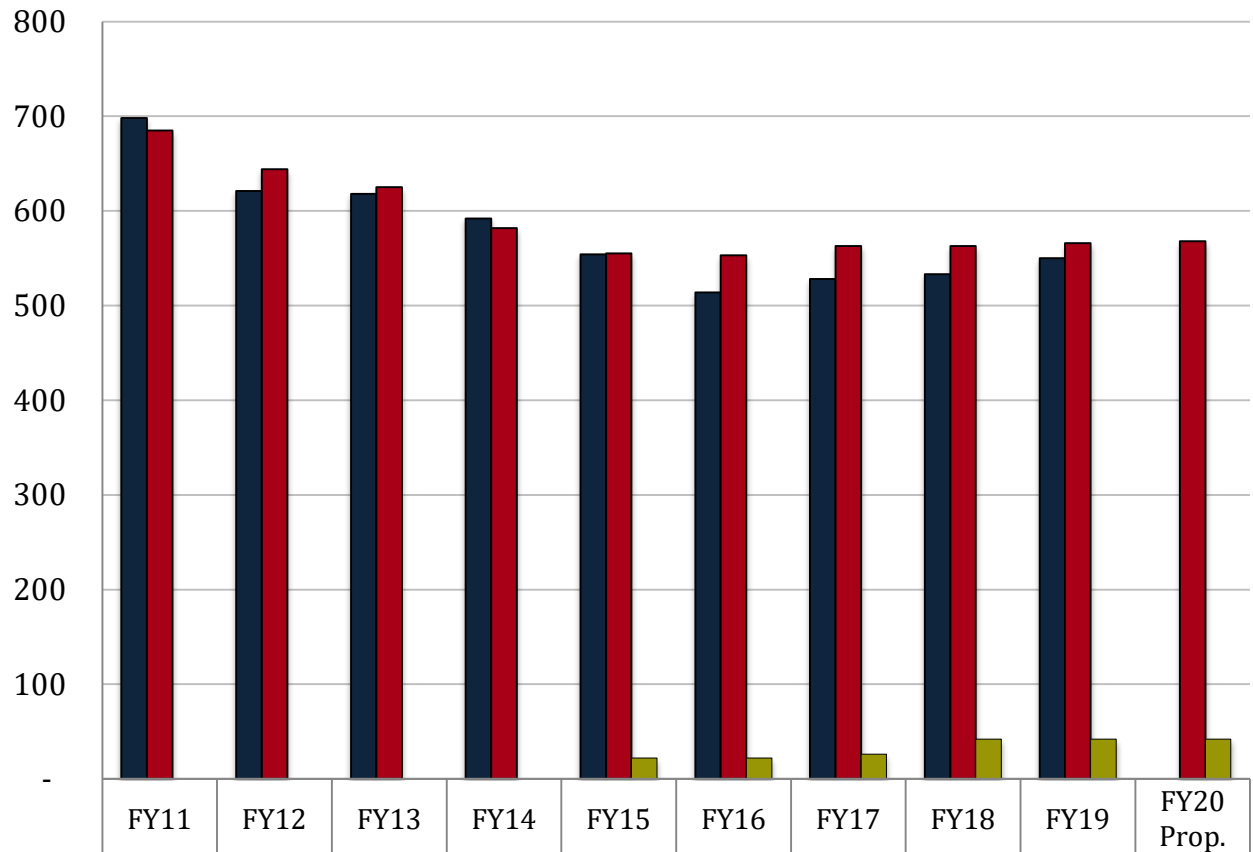
Expenditure Category	FY18 Actual	FY19 EOB (as of 12-01-18)	FY20		Difference FY19 to FY20
			Proposed Budget	Category as Percent of Total	
<b>Personal Services:</b>	<b>\$50,228,665</b>	<b>\$53,670,249</b>	<b>\$55,152,738</b>	<b>73.86%</b>	<b>\$1,482,489</b>
Salaries	\$28,987,575	\$30,893,005	\$31,381,549	42.03%	\$488,544
Other Compensation	\$1,322,760	\$1,523,652	\$1,523,652	2.04%	\$0
Related Benefits	\$19,918,330	\$21,253,592	\$22,247,537	29.79%	\$993,945
<b>Operating Expenses:</b>	<b>\$9,594,951</b>	<b>\$9,917,509</b>	<b>\$9,862,129</b>	<b>13.21%</b>	<b>(\$55,380)</b>
Travel	\$310,361	\$292,975	\$342,975	0.46%	\$50,000
Operating Services	\$6,051,717	\$6,293,407	\$6,288,027	8.42%	(\$5,380)
Supplies	\$3,232,873	\$3,331,127	\$3,231,127	4.33%	(\$100,000)
<b>Professional Services</b>	<b>\$347,894</b>	<b>\$438,942</b>	<b>\$438,942</b>	<b>0.59%</b>	<b>\$0</b>
<b>Other Charges:</b>	<b>\$10,603,622</b>	<b>\$7,207,832</b>	<b>\$6,949,518</b>	<b>9.31%</b>	<b>(\$258,314)</b>
Other Charges	\$2,543,913	\$4,312,976	\$4,136,063	5.54%	(\$176,913)
Debt Service	\$5,796,051	\$0	\$0	0.00%	\$0
Interagency Transfers	\$2,263,658	\$2,894,856	\$2,813,455	3.77%	(\$81,401)
<b>Acquisitions &amp; Major Repairs:</b>	<b>\$355,661</b>	<b>\$2,072,131</b>	<b>\$2,266,206</b>	<b>3.03%</b>	<b>\$194,075</b>
Acquisitions	\$355,661	\$2,072,131	\$1,972,996	2.64%	(\$99,135)
Major Repairs	\$0	\$0	\$293,210	0.39%	\$293,210
<b>Total Expenditures</b>	<b>\$71,130,793</b>	<b>\$73,306,663</b>	<b>\$74,669,533</b>	<b>100.00%</b>	<b>\$1,362,870</b>



# Department of Ag. and Forestry

## FTEs, Authorized Positions, and Other Charges Positions

Total FY20 Recommended Authorized Positions of 568 are 1.69% of Total State FY20 Recommended Authorized Positions of 33,675.



■ Total FTEs (as of July 1 of each fiscal year)	698	621	618	592	554	514	528	533	550	-
■ Total Authorized Positions (Enacted)	685	644	625	582	555	553	563	563	566	568
■ Authorized Other Charges Positions	-	-	-	-	22	22	26	42	42	42

### Notes:

Data for Total FTEs uses the first weekly employment report published by State Civil Service in July at the start of the named fiscal year.

Data for Total Authorized Positions uses fiscal year enacted levels, except for FY20 Proposed.

Data for Other Charges Positions are reflected in the Executive Budget per Act 377 of the 2013 Regular Legislative Session (beginning in FY15).



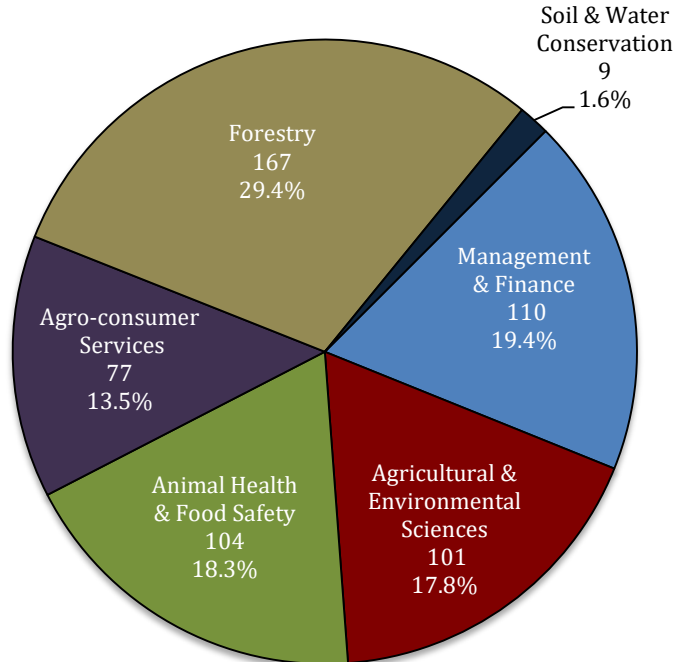
# Dept. of Ag. & Forestry

## FY20 Proposed Total Authorized Positions by Agency

*Forestry – The largest categories of positions are spread among fire districts, including District 6 - Hammond, District 4 - Oberlin, District 3 - Jena, District 1 - Haughton, and District 2 - Monroe. The remaining positions are spread among administration, central services, enforcement, and education.*

*Agro-Consumer Services – The largest categories of positions include Weights and Measures and the Agricultural Commodities and Dealers Warehouse Activity. The remaining positions are spread among the Dairy Stabilization Board, Administration, and Commodity Promotion and Research.*

*Animal Health & Food Safety – The largest categories of positions include Federal/State Meat Activity, the Livestock Sanitary Board, and the Food Distribution Activity. The remaining positions are spread among Poultry and Eggs, Fruit and Vegetables, Livestock Brand Commission, Promotion and Research, and the Feed Program.*



*Soil and Water Conservation – Duties of these positions include administration of the Agricultural Solid Waste Program, Federal Conservation Program, Coastal Marsh Vegetation Planting Program, USDA State Cooperative Soil Survey Program, EPA Clean Water Act provisions, and educational outreach.*

*Management & Finance – The largest categories of positions include support services and fleet and facility operations. The remaining positions are spread among executive functions, IT, print shop, market information, Indian Creek Recreation Area, and the La. Agricultural Finance Authority.*

*Agricultural & Environmental Services – The largest categories of positions include the Pesticide & Environmental Program, the Agricultural Chemistry Program, and the Horticulture & Quarantine Program. The remaining positions are spread among the Seed, Sweet Potato, Pest Control, Pesticide Enforcement, Pesticide Certification, USDA Horticulture, Boll Weevil, and Food Safety Programs.*

Dept. of Ag. & Forestry	
Management & Finance	110
Agric. & Environmental Sciences	101
Animal Health & Food Safety	104
Agro-consumer Services	77
Forestry	167
Soil & Water Conservation	9
<b>Total Positions</b>	<b>568</b>



# Significant Budget Adjustments Proposed for FY20

## Statewide Adjustments to the Department of Ag. & Forestry Budget

State General Fund (Direct)	Interagency Transfers	Fees and Self-generated Revenues	Statutory Dedications	Federal Funds	Total	T.O.	Adjustment
\$641,729	\$0	\$0	\$339,076	\$0	\$980,805	0	Market Rate Classified
\$45,587	\$0	\$0	\$64,546	\$0	\$110,133	0	Civil Service Training Series Adjustment
(\$62,483)	\$0	\$0	\$31,820	\$0	(\$30,663)	0	Related Benefits Base Adjustment
\$525,645	\$0	\$0	\$307,443	\$0	\$833,088	0	Retirement Rate Adjustment
\$73,789	\$0	\$0	\$42,800	\$0	\$116,589	0	Group Insurance Rate Adjustment for Active Employees
\$150,480	\$0	\$0	\$0	\$0	\$150,480	0	Group Insurance Rate Adjustment for Retirees
\$184,130	\$0	\$0	\$234,425	\$0	\$418,555	0	Salary Base Adjustment
(\$1,137,340)	\$0	\$0	(\$155,065)	\$0	(\$1,292,405)	0	Attrition Adjustment
\$0	\$0	\$0	\$2,066,206	\$200,000	\$2,266,206	0	Acquisitions & Major Repairs
\$0	\$0	(\$650,400)	(\$966,206)	\$0	(\$1,616,606)	0	Non-Recurring Acquisitions & Major Repairs
\$0	\$0	\$0	(\$736,385)	\$0	(\$736,385)	0	Non-recurring Carryforwards
(\$76,778)	\$0	\$0	\$0	\$0	(\$76,778)	0	Risk Management
\$6,372	\$0	\$0	\$0	\$0	\$6,372	0	Legislative Auditor Fees
\$1,770	\$0	\$0	\$0	\$0	\$1,770	0	UPS Fees
\$5,024	\$0	\$0	\$0	\$0	\$5,024	0	Civil Service Fees
(\$9,148)	\$0	\$0	\$0	\$0	(\$9,148)	0	State Treasury Fees
\$8,773	\$0	\$0	\$0	\$0	\$8,773	0	Office of Technology Services (OTS)
(\$5,372)	\$0	\$0	\$0	\$0	(\$5,372)	0	Office of State Procurement
(\$12,042)	\$0	\$0	\$0	\$0	(\$12,042)	0	Topographic Mapping
\$523,700	\$0	(\$523,700)	\$0	\$0	\$0	0	TOTAL MEANS OF FINANCING SUBADJUSTMENT
(\$130,280)	\$0	\$0	(\$25,100)	\$650,000	\$494,620	2	TOTAL OTHER ADJUSTMENTS ADJUSTMENT
\$0	(\$1,614)	(\$248,532)	\$0	\$0	(\$250,146)	0	TOTAL OTHER TECHNICAL ADJUSTMENTS ADJUSTMENT
\$733,556	(\$1,614)	(\$1,422,632)	\$1,203,560	\$850,000	\$1,362,870	2	Total Statewide Adjustments



# Dept. of Ag. & Forestry

## FY20 Proposed Means of Finance by Agency

### 04-160 — Dept. of Ag. & Forestry FY20 Proposed Means of Financing by Agency

Total MOF by Agency	SGF	IAT	FSGR	Stat Deds	Federal	Total
Management & Finance	\$10,439,917	\$189,035	\$2,053,575	\$6,788,152	\$685,047	\$20,155,726
Agricultural & Environmental Sciences	\$0	\$0	\$74,962	\$12,047,088	\$1,052,317	\$13,174,367
Animal Health & Food Safety	\$1,324,041	\$0	\$4,002,688	\$4,394,090	\$4,547,685	\$14,268,504
Agro-Consumer Services	\$0	\$0	\$621,016	\$7,788,686	\$623,532	\$9,033,234
Forestry	\$7,269,749	\$295,000	\$229,536	\$5,557,832	\$2,675,076	\$16,027,193
Soil & Water Conservation	\$0	\$194,557	\$0	\$539,636	\$1,276,316	\$2,010,509
<b>Dept. of Ag &amp; Forestry</b>	<b>\$19,033,707</b>	<b>\$678,592</b>	<b>\$6,981,777</b>	<b>\$37,115,484</b>	<b>\$10,859,973</b>	<b>\$74,669,533</b>

Agency	Program Description
<b>Management &amp; Finance</b>	Provides department-wide coordination, personnel and basic resources which are essential to the accomplishment of the Department's mission, in a timely, effective and accurate manner and in compliance with applicable laws, rules and regulations.
<b>Agricultural &amp; Environmental Sciences</b>	The mission of the Office of Agricultural and Environmental Sciences is to ensure that animal feeds, pet foods, fertilizers, agricultural liming materials and pesticides meet all requirements of law; to monitor, prevent, control and eradicate plant pests and diseases that threaten Louisiana's agriculture, environment and economy; to facilitate agricultural exports through certification of products; to oversee the qualifications and practices of persons engaged in the green industry; to protect human health and the environment by ensuring the proper labeling, distribution, storage, use, application and disposal of pesticides, and through enforcement of all pesticide laws; to ensure that seed sold for planting meets label guarantees and quality standards; and to ensure a safe, abundant supply of food and fiber.
<b>Animal Health &amp; Food Safety</b>	Maintains a safe and healthful food supply for the people of Louisiana, while simultaneously protecting and safeguarding the producers of these products. The program inspects and grades food products, controls livestock diseases and tracks ownership of livestock through a branding activity. The activities of this program are: Administration, Federal/State Meat Program, Poultry and Egg Inspection, Food Quality Services, Livestock Disease Prevention, Livestock Theft Prevention, Emergency Response Team, and Food Distribution Program.



# Dept. of Ag. & Forestry

## FY20 Proposed Means of Finance by Agency

### 04-160 — Dept. of Ag. & Forestry FY20 Proposed Means of Financing by Agency

Total MOF by Agency	SGF	IAT	FSGR	Stat Deds	Federal	Total
Management & Finance	\$10,439,917	\$189,035	\$2,053,575	\$6,788,152	\$685,047	\$20,155,726
Agricultural & Environmental Sciences	\$0	\$0	\$74,962	\$12,047,088	\$1,052,317	\$13,174,367
Animal Health & Food Safety	\$1,324,041	\$0	\$4,002,688	\$4,394,090	\$4,547,685	\$14,268,504
Agro-Consumer Services	\$0	\$0	\$621,016	\$7,788,686	\$623,532	\$9,033,234
Forestry	\$7,269,749	\$295,000	\$229,536	\$5,557,832	\$2,675,076	\$16,027,193
Soil & Water Conservation	\$0	\$194,557	\$0	\$539,636	\$1,276,316	\$2,010,509
<b>Dept. of Ag &amp; Forestry</b>	<b>\$19,033,707</b>	<b>\$678,592</b>	<b>\$6,981,777</b>	<b>\$37,115,484</b>	<b>\$10,859,973</b>	<b>\$74,669,533</b>

Agency	Program Description
<b>Agro-Consumer Services</b>	Ensures that equity prevails in the marketplace by regulating various aspects of commerce and trade and by promoting and heightening consumer awareness of Louisiana's agricultural commodities to increase sales, thereby enhancing the economic well being of Louisiana farmers and the State as a whole. The Office ensures that Louisiana consumers get what they pay for, that producers have markets available and receive fair compensation for their commodities, and that businesses have a favorable environment in which to operate.
<b>Forestry</b>	Ensures sustained, multiuse forestlands for the citizens of Louisiana. This goal takes into account the production of wood fiber while enhancing the recreational, wildlife and environmental values of forestlands.
<b>Soil &amp; Water Conservation</b>	Achieves a productive balance between Louisiana agricultural production and processing and a healthy environment, wherein soil loss is reduced to within tolerable limits, water quality impairments due to agricultural processes are significantly reduced, and the quality of the state's wildlife habitat, wetlands and other natural areas and resources are enhanced.



# Comparison Adjustments to the State General Fund in the FY20 Continuation, Standstill and Proposed Budgets

AG & FORESTRY	FY19 EOB	FY20 Proposed Budget	FY 20 Continuation Budget	FY20 Standstill Budget	DIFFERENCE					
					CONTINUATION OVER/(UNDER) FY19 EOB	STANDSTILL OVER/(UNDER) FY19 EOB	CONTINUATION OVER/(UNDER) STANDSTILL	PROPOSED OVER/(UNDER) CONTINUATION	PROPOSED OVER/(UNDER) STANDSTILL	PROPOSED OVER/(UNDER) FY19 EOB
STATE GENERAL FUND	\$18,300,151	\$19,033,707	\$20,436,930	\$20,436,930	\$2,136,779	\$2,136,779	\$0	(\$1,403,223)	(\$1,403,223)	\$733,556

## Continuation Budget, Standstill Budget, and Proposed Budget

Adjustments for the Continuation Budget and the Standstill Budget are identical. The difference between the Proposed Budget and the Continuation and Standstill Budgets results from variations to both statewide and agency-specific adjustments. The majority of the difference is due to the \$1.1 million attrition reduction in state general fund expenditures proposed for FY20.

Difference between the Governor's Proposed Budget (HB 103 by Rep. Leger) and House Bill No. 105 by Rep. Henry

For this department, House Bill No. 105 reduces state general fund proposed for FY20 by \$733,556. This is the amount of the increase proposed by the governor above the FY19 Existing Operating Budget.

DEPARTMENT	EOB AS OF 12/01/2018	HB 103 REP. LEGER	HB 105 REP. HENRY	HB 105 OVER/(UNDER) HB 103
Ag & Forestry	\$18,300,151	\$19,033,707	\$18,300,151	(\$733,556)



# House Appropriations Committee and House Floor Changes to HB105 and Comparison to the Proposed FY20 Budget

## House Amendments to HB105 - Department of Ag & Forestry

HB 105	State General Fund	Interagency Transfers	Fees and Self-generated Revenues	Statutory Dedications	Federal	TOTAL
<b>Original</b>	<b>\$18,300,151</b>	<b>\$678,592</b>	<b>\$6,981,777</b>	<b>\$37,115,484</b>	<b>\$10,859,973</b>	<b>\$73,935,977</b>
Appropriations Amendments:	State General Fund	Interagency Transfers	Fees and Self-generated Revenues	Statutory Dedications	Federal	TOTAL
Reduces state general fund monies for the Animal Health and Food Safety Program.	(\$96,525)	\$0	\$0	\$0	\$0	(\$96,525)
Authorizes the commissioner of administration to reduce the federal budget for the Management and Finance Program due to excess budget authority	\$0	\$0	\$0	\$0	(\$133,000)	(\$133,000)
Authorizes the commissioner of administration to reduce the federal budget for the Agricultural and Environmental Sciences Program due to excess budget authority	\$0	\$0	\$0	\$0	(\$350,000)	(\$350,000)
Authorizes the commissioner of administration to reduce the federal budget for the Agro-Consumer Services Program due to excess budget authority	\$0	\$0	\$0	\$0	(\$233,000)	(\$233,000)
Authorizes the commissioner of administration to reduce the federal budget for the Forestry Program due to excess budget authority	\$0	\$0	\$0	\$0	(\$784,000)	(\$784,000)
Provides additional state general fund for the Forestry Program for operating expenses	\$503,851	\$0	\$0	\$0	\$0	\$503,851
<b>Reengrossed</b>	<b>\$18,707,477</b>	<b>\$678,592</b>	<b>\$6,981,777</b>	<b>\$37,115,484</b>	<b>\$9,359,973</b>	<b>\$72,843,303</b>
<b>Difference HB105 Original to HB105 Reengrossed</b>	<b>\$407,326</b>	<b>\$0</b>	<b>\$0</b>	<b>\$0</b>	<b>(\$1,500,000)</b>	<b>(\$1,092,674)</b>
<b>FY20 Proposed</b>	<b>\$19,033,707</b>	<b>\$678,592</b>	<b>\$6,981,777</b>	<b>\$37,115,484</b>	<b>\$10,859,973</b>	<b>\$74,669,533</b>
<b>Difference HB105 Original to FY20 Proposed</b>	<b>(\$733,556)</b>	<b>\$0</b>	<b>\$0</b>	<b>\$0</b>	<b>\$0</b>	<b>(\$733,556)</b>
<b>Difference HB105 Reengrossed to FY20 Proposed</b>	<b>(\$326,230)</b>	<b>\$0</b>	<b>\$0</b>	<b>\$0</b>	<b>(\$1,500,000)</b>	<b>(\$1,826,230)</b>



# Department of Agriculture and Forestry

## Major Initiative:

### Medical Marijuana –

**Regulation:** The Louisiana Department of Agriculture and Forestry (LDAF) is designated as the state's lead regulatory agency in the licensure and production of therapeutic marijuana. The Medical Marijuana Program is responsible for licensing and overseeing the production of medical marijuana to ensure safety of the final product.

**Authorized Growers:** The legislature has only authorized Louisiana State University Agricultural Center and Southern University Agricultural Center to be licensed to grow medical marijuana.

**Definition:** Medical Marijuana—substances which are identified as including any parts of the plant *Cannabis sativa*, and all derivatives or subspecies of all strains of cannabis, whether growing or not, the seeds thereof; the resin extracted from any part of such plant; and any compound, manufacture, salt, derivative, mixture, or preparation of such plant, its seeds, or resin, including tetrahydrocannabinol (THC), Cannabidiol (CBD) and all other naturally occurring cannabinol derivatives, whether produced directly or indirectly by extraction. Refer to Act— R.S. 40:1046, et. seq. §101. Definitions for more information.

**Licensed Pharmacies:** Nine (9) licensed pharmacies were appointed by the Louisiana Board of Pharmacy to distribute medical marijuana. May be subject to change. Please contact the Louisiana Board of Pharmacy for more information.

<http://www.pharmacy.la.gov/>

**Eligibility for Use:** Medical marijuana must be prescribed by a physician for certain conditions defined in statute. Those conditions include cancer, positive status for HIV, AIDS, cachexia or wasting syndrome, seizure disorders, epilepsy, spasticity, Crohn's disease, muscular dystrophy, multiple sclerosis, glaucoma, Parkinson's disease, severe muscle spasms, intractable pain, post traumatic disorder, and some symptoms associated with autism spectrum disorder. (See Act 261 of 2015; Act 708 of 2018; and Act 496 of 2018)

**Date of Availability:** The anticipated date of availability for medical marijuana is June, 2019.



# Department of Agriculture and Forestry

## Schedule 20-941: Ag & Forestry Pass-Through Funds

Agriculture and Forestry Pass Through Funds includes pass through funds for the 44 Soil and Water Conservation Districts in Louisiana, the Temporary Emergency Food Assistance Program, Specialty Crop Block Grant, Volunteer Fire Assistance, Forest Land Enhancement Program, Southern Pine Beetle, Urban and Community Forestry, State Fire Assistance – Mitigation, Forest Stewardship Program, Forest Health Monitoring, and the Forest Productivity Program.

This program is funded with state general fund, interagency transfers, statutory dedications and federal funds.

Interagency transfers are received from the Office of Coastal Protection and Restoration and the Louisiana State Racing Commission.

Statutory dedications are received from the Louisiana Agricultural Finance Authority Fund; the Forest Productivity Fund that receives 75% of the state's share of the timber severance tax; the Grain and Cotton Indemnity Fund; and the Agricultural Commodity Commission Self-Insurance Fund.

Federal funds are received from the U.S. Forest Service for 1) Urban Forestry Assistance, 2) Southern Pine Beetle, 3) Forest Land Enhancement, 4) Forest Health Program, 5) Volunteer Fire Assistance, 6) Forestry Stewardship Program, and 7) Fire Assistance.

Federal funds are also received for Temporary Emergency Food Assistance Program, Specialty, Specialty Crop Block Grant, and Soil and Water Conservation.

Amount	Expenditure Description
\$1,600,000	The Emergency Food Assistance Program
\$496,815	Specialty Crop Block Grant
\$1,116,500	Federal Grants including Volunteer Fire Assistance, Urban & Community Forestry, State Fire Assistance Mitigation, Forest Health Monitoring, and the Forest Stewardship Program
\$60,000	Racing Commission - Louisiana Horse Racing Industry Promotion
\$3,000,000	Forest Productivity Program
\$350,000	Agricultural Commodity Commission Self-Insurance Fund
\$534,034	Grain and Cotton Indemnity Fund
\$4,482,212	Soil and Water Conservation Districts
\$3,500,000	Forest Legacy Program - Clear Creek Wildlife Management Area
<b>\$15,139,561</b>	<b>TOTAL</b>